

Payton III

3 Bedrooms / 2.5 Baths

3,155 sq ft

FARMHOUSE COLLECTION



Elevation FH-1



Elevation FH-2



*Information believed accurate but not warranted. All drawings and elevation renderings are artistic representations only. Floor plan details & final decisions to be made by Kerley Family Homes. This document is for informational purposes only and is subject to change without notice. Please contact onsite agent for details regarding availability, lots and options. Updated 1/11/23.

[KerleyFamilyHomes.com](https://www.KerleyFamilyHomes.com)

Information believed accurate but not warranted. Prices and offer subject to change without prior notice.



Payton III

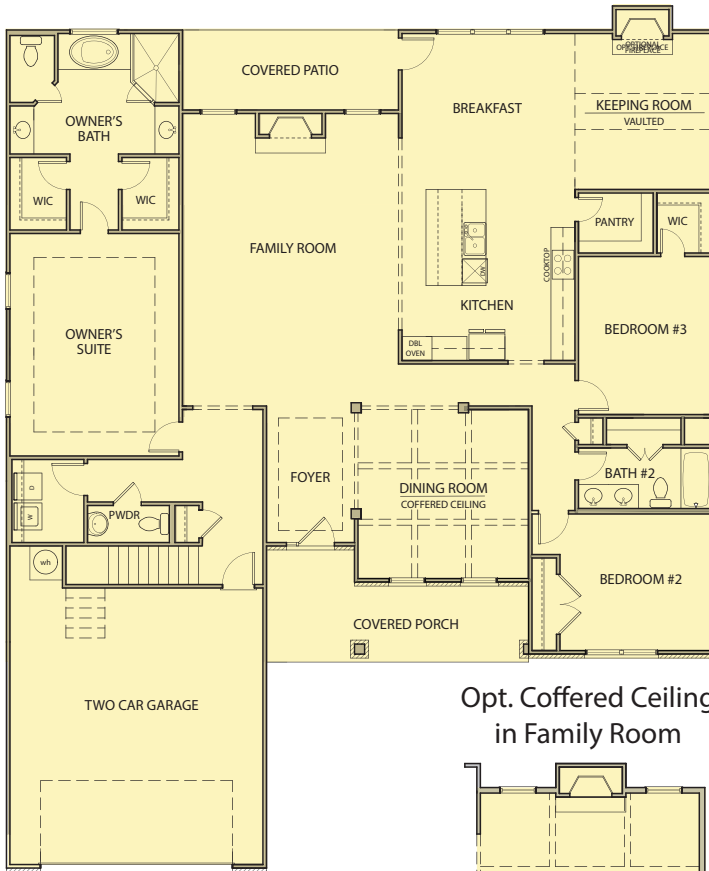
3 Bedrooms / 2.5 Baths

3,155 sq ft

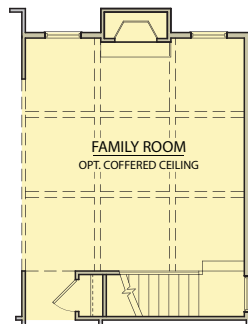
FARMHOUSE COLLECTION



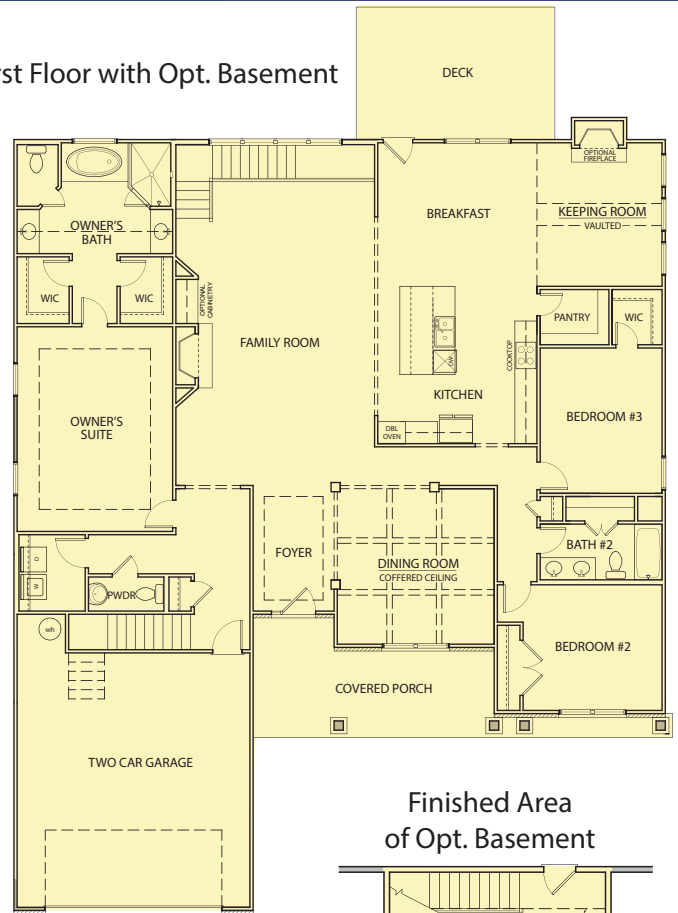
First Floor FH-1



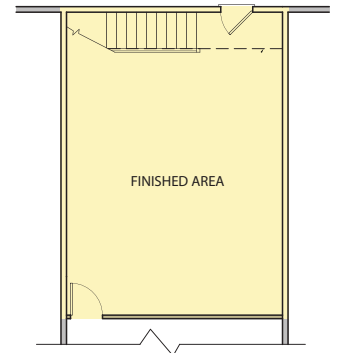
Opt. Coffered Ceiling in Family Room



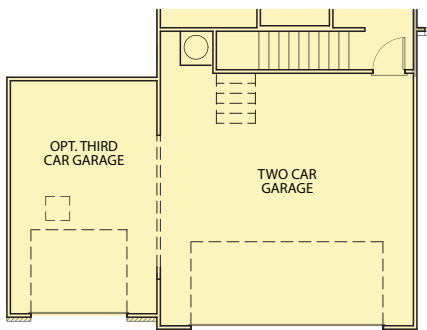
First Floor with Opt. Basement



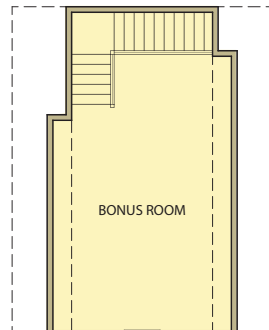
Finished Area of Opt. Basement



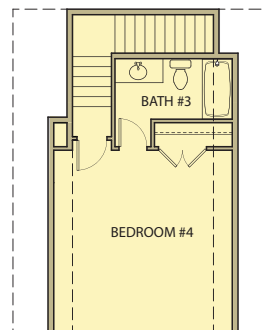
Opt. Third Car Garage



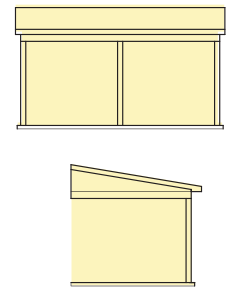
Second Floor Bonus Room



Second Floor w/ Opt. Bath



Opt. Covered Patio



*Information believed accurate but not warranted. All drawings and elevation renderings are artistic representations only. Floor plan details & final decisions to be made by Kerley Family Homes. This document is for informational purposes only and is subject to change without notice. Please contact onsite agent for details regarding availability, lots and options. Updated 1/11/23.