

# Somerset III

5 Bedrooms / 4.5 Baths

3,480 - 3,600 sq ft

FARMHOUSE COLLECTION



Elevation FH-1



Elevation FH-2



\*Information believed accurate but not warranted. All drawings and elevation renderings are artistic representations only. Floor plan details & final decisions to be made by Kerley Family Homes. This document is for informational purposes only and is subject to change without notice. Please contact onsite agent for details regarding availability, lots and options. Updated 5.16.23.

[KerleyFamilyHomes.com](https://www.KerleyFamilyHomes.com)

Information believed accurate but not warranted. Prices and offer subject to change without prior notice.



# Somerset III

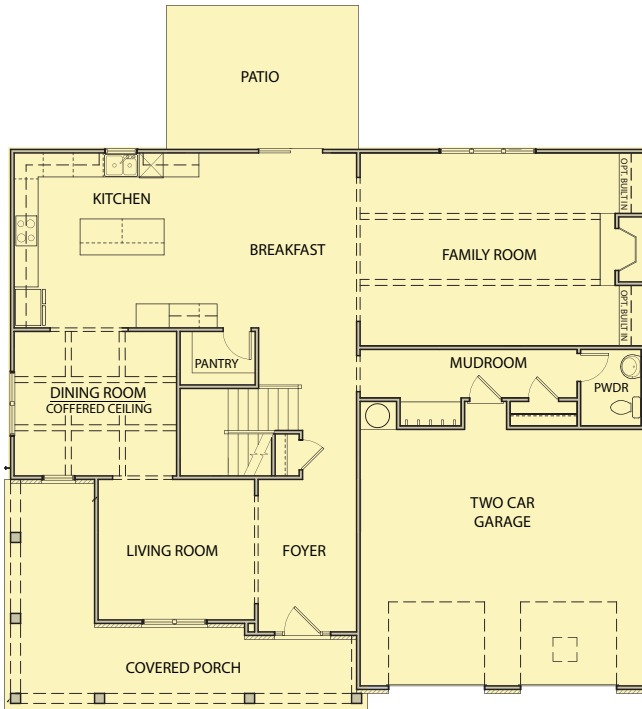
5 Bedrooms / 4.5 Baths

3,480 - 3,600 sq ft

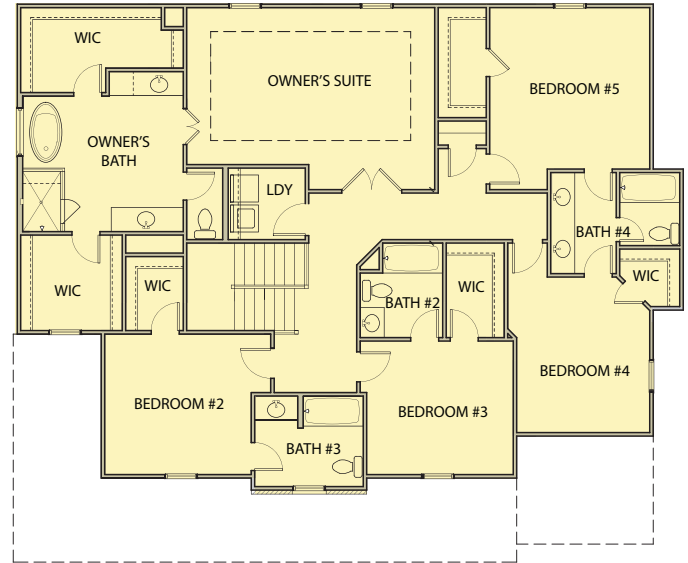
FARMHOUSE COLLECTION



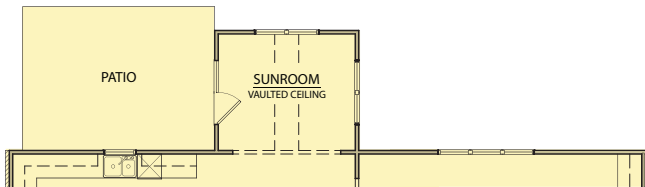
First Floor



Second Floor



Opt. Sunroom



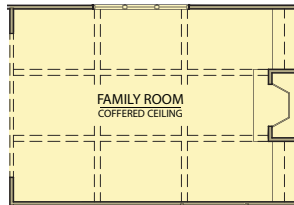
Opt. Sitting Room



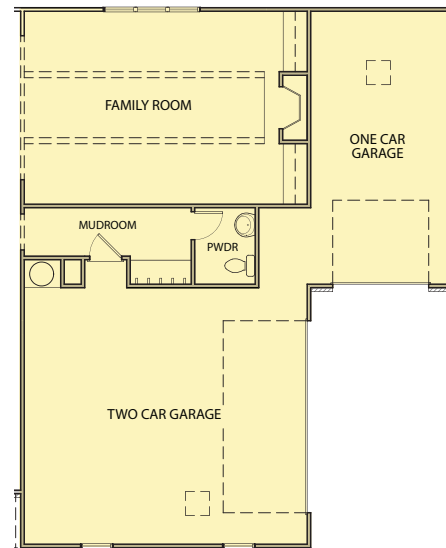
Opt. Owner's Shower



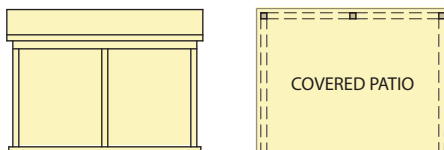
Opt. Coffered Ceiling



Opt. Third Car Garage



Opt. Covered Patio



\*Information believed accurate but not warranted. All drawings and elevation renderings are artistic representations only. Floor plan details & final decisions to be made by Kerley Family Homes. This document is for informational purposes only and is subject to change without notice. Please contact onsite agent for details regarding availability, lots and options. Updated 5.16.23.